

Testing dummy/mannequin according to Standards or Customer Specification

[www.avrnd.eu](http://www.avrnd.eu)



**AV051**  
100 kg  
ANSI Z359.11  
2014 (UIAA)

**AV054**  
160 kg  
ANSI Z259.10-18  
2014 (UIAA)



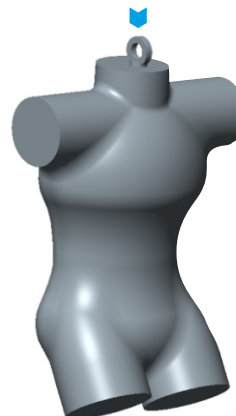
**AV018**  
136 kg  
ANSI/NFPA  
1983 (UIAA)



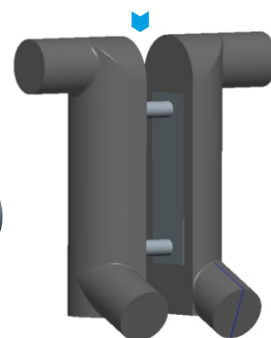
**AV049** 100 kg  
**AV059** 50 kg  
**AV065** 20 kg  
EN 364:1992



**AV041** 140 kg  
**AV066** 20 kg  
EN 12 277 A



**AV060** 22 kg  
EN 12 277 B



**AV053** 9,4 kg  
14,5 kg  
ISO 12 402-9



**AV046** 11 kg  
15 kg  
18 kg  
EN 13 138-3



**AV058** 19 kg  
30 kg  
EN 13 138-1

**AV052** 100 kg - 150 kg  
Aluminum testing dummy  
EN 364:1992



**CUSTOMER SPECIFICATION**

- ▶ Default set-up of dummy according to EN364
- ▶ Possibility to increase weight by 50kg with additional weights added into internal cavity accessible from back side

For more information

[www.avrnd.eu](http://www.avrnd.eu)